



**Pamber Parish Council**

# Community Emergency Plan

For Pamber Heath; Pamber End; Pamber Green: Little  
London

Plan date: October 2013

**IF YOU ARE IN  
IMMEDIATE DANGER  
CALL 999**

# CONTENTS

Plan Distribution List	3
Plan Amendment List	3
First steps in an emergency	4
Local Risk Assessment	5
Local Skills and Resources Assessment	6
Key locations	7
Emergency Contact List	8
List of community organisations	9
Activation triggers	9
Activation Flow Chart	10
Community Emergency Group First Meeting Agenda	11
Actions agreed with local authority in the event of an evacuation	12
Alternative arrangements for staying in contact if usual communications have been disrupted	12
Useful Links	12
Pamber Parish Council Contact List	13

## Plan distribution list

Name	Post/email	First issued on	Revised 10.11.14
BDBC	E. Mail emergency.planning@basingstoke.gov.uk	3.12.13	24.11.14
Hampshire CC	E. Mail epoffice@hants.gov.uk	3.12.13	24.11.14
All Parish Cllrs.	E mail	3.12.13	24.11.14
Borough Cllrs.	E mail	3.12.13	24.11.14
County Cllr.	E mail	3.12.13	24.11.14
The Plough	Post	3.12.13	24.11.14
The Pelican Inn	Post	3.12.13	24.11.14
Elm Park Nursery	E mail	3.12.13	24.11.14
Pamber Heath Stores	Post	2.12.13	24.11.14
Management Committee, Memorial Hall	E mail	3.12.13	24.11.14
Management Committee, St. Stephen's Hall	E mail	3.12.13	24.11.14
Police Authority	E mail		24.11.14
Fire Authority	E mail		24.11.14

Details of any revisions will be sent when they arise.

## Plan Amendment List

Date of Amendment	Details Of Changes Made	
10.11.14	Various	

# First Steps in an Emergency

Follow the instructions below when the plan is activated and use in conjunction with the Activation Chart on page 10

	Instructions	Tick
1	Call 999 (unless already alerted) if appropriate.	
2	Ensure you are in no immediate danger.	
3	Is there a risk to life?	
4	If a risk to life or risk of potential disruption, activate emergency plan.	
5	Contact any relevant agencies: Borough Council; County Council; Fire and Rescue; Utility Services, police, parish councillors etc	
6	Assess who will be affected by the emergency situation. Start to arrange any emergency evacuations.	
7	If appropriate, alert contacts at emergency meeting places: Memorial Hall Pamber Park St. Stephen's Hall and other rest centres if needed.	
8	Contact other volunteers and arrange for public to be informed of places of safety.	
9	Contact appropriate volunteers to carry out emergency work.	
10	Alert Village Shop if appropriate.	
11	Assess and monitor situation and involve additional assistance as and when necessary.	
12	Continue to liaise with all concerned agencies.	
13	Keep parish councillors informed.	
14	Inform all concerned when emergency has passed.	

# Local Risk Assessment

Risks	Impact on community	What can Community Emergency Group do to prepare? What action can be taken?
Flooding	<ul style="list-style-type: none"> <li>Flooding of local streets</li> <li>Damage to property</li> </ul>	<ul style="list-style-type: none"> <li>Encourage residents to improve home flood defences</li> <li>Monitor flood warnings.</li> <li>Work with local emergency responders to see if can help with distribution of flood warnings and any evacuation and rest centre establishment required</li> <li>Find out what flood defences exist or are planned in the area</li> <li>Make arrangements for local halls to be available for evacuees.</li> </ul>
Severe weather To include snow	<ul style="list-style-type: none"> <li>Loss of utilities</li> <li>Fallen trees</li> <li>Damage to buildings</li> <li>Blocked roads</li> <li>Loss of public transport</li> <li>Access to town/workplace etc affected</li> <li>Vulnerable people unable to obtain essential supplies.</li> </ul>	<ul style="list-style-type: none"> <li>Identify road blockages and if possible arrange clearance of fallen debris by volunteers.</li> <li>Ensure that salt bins are provided across the parish.</li> <li>Make community aware of impact on vulnerable people and encourage a neighbourhood response.</li> <li>Emergency rest centre activated as necessary.</li> <li>Identify any dangerous trees.</li> <li>Enlist help of volunteers.</li> <li>Snow shovels held by Cllrs. Goss, Gardiner and Tyson.</li> </ul>
Major Fire	<ul style="list-style-type: none"> <li>Damage to buildings</li> <li>Possible danger to life.</li> </ul>	Hampshire CC has responsibility for finding temporary accommodation for evacuees and in the long term the needs of evacuees will be met by the local authority. As a temporary short term measure, make arrangements for local halls to be available for evacuees if needed.
AWE Emergency	<ul style="list-style-type: none"> <li>Danger to health</li> <li>Danger to life</li> </ul>	<ul style="list-style-type: none"> <li>Put transport arrangements in place</li> <li>Move residents to place of safety</li> <li>AWE extant Plan</li> </ul>
Loss of utilities	<ul style="list-style-type: none"> <li>Danger to health and life if water not available.</li> <li>Vulnerable groups at risk if there is a lack of heating during the winter.</li> </ul>	<ul style="list-style-type: none"> <li>Encourage residents to watch out for vulnerable neighbours</li> <li>Arrange with BDBC and water company for water supplies to be brought in</li> <li>Provide day time warmth at community centres.</li> <li>Arrange for hot meals to be made available at community centres for vulnerable.</li> </ul>
Major road incident	<ul style="list-style-type: none"> <li>Danger to life</li> <li>Injuries.</li> <li>Emergency services require assistance</li> </ul>	<ul style="list-style-type: none"> <li>Contact First Aiders, Emergency Services.</li> </ul>
Gas leak	<ul style="list-style-type: none"> <li>Danger to life</li> </ul>	<ul style="list-style-type: none"> <li>Evacuate area.</li> <li>Activate Emergency Rest Centres.</li> </ul>
Terrorism or Violence	<ul style="list-style-type: none"> <li>Building damage</li> <li>Threat to life</li> <li>Injuries</li> <li>Emergency Services require assistance.</li> </ul>	<ul style="list-style-type: none"> <li>Evacuate area</li> <li>Emergency Rest Centres activated.</li> <li>Contact First Aiders</li> </ul>
Aircraft Incident	<ul style="list-style-type: none"> <li>Building damage</li> <li>Threat to life</li> <li>Injuries</li> <li>Emergency Services require assistance</li> </ul>	<ul style="list-style-type: none"> <li>Evacuate area</li> <li>Emergency Rest Centres activated.</li> <li>Contact First Aiders</li> </ul>

## Local Skills And Resources Assessment

Skill/resource	Who?	Contact details	Location	When might be unavailable
4x4 owner/driver	Peter Mears	07867521160	Pamber End.	
4x4 owner/driver	George March	01256 850850	Little London	
4x4 owner/driver	George McGarvie	0780 878 4202	Pamber Heath	
4x4 owner/driver	Nicky & Stuart Allcock	01189 701409 M: 07766 814121		
Chainsaw owner (tree surgeon)	Peter Mears	07867521160	Pamber End.	
Chain saw	Richard Brown	01189 700100	Pamber Heath	
Chain saw	Trevor Young	01189 810189	Pamber Heath	
Chain saw	George March	01256 850850	Little London	
Tractor	Peter Mears	07867521160	Pamber End.	
Quad bike	George March	01256 850850	Little London	
Water/food supplies	Pamber Heath Stores	0118 9701659	Silchester Road, Pamber Heath	
Water/food supplies	Pelican Inn	0118 9700286	Silchester Road, Pamber Heath	
Water/food supplies	The Plough Inn	01256 850628	Little London	
Pump in case of flooding	George March	01256 850850	Little London	
Chainsaw	Andrew Whiteman	07730 812528 andrew@whitemen.net	Little London	
Medical Treatment	Tadley Medical Partnership	0118 981 4166 Out of Hours: 0118 981 4166 www.tadleymedical.co.uk	Holmwood Health Centre Franklin Avenue, Tadley RG26 4ER	
Medical Treatment.	Clift Surgery	Main Telephone Line: 01256 88122 www.cliftsurgery.co.uk	Clift Surgery Minchens La Bramley RG26 5BH	
Salt Bins			Impstone Road Burney Bit Corner Burney Bit + various others around the parish.	

## Key Locations for use as places of safety

Building	Location	Potential usage in an emergency	Contact details
The Memorial Hall	Pamber Heath Road, Pamber Heath	Rest Centre/safe place	0118 9701269
St. Stephen's Hall	Little London	Rest Centre/safe place	01256 889073
The Pelican Inn	Pamber Heath	Rest Centre/safe place	0118 9700286
The Plough Inn	Little London	Rest Centre/safe place	01256 850628
Pamber Park	Pamber Heath	Large open air assembly point	Any Parish Councillor/the Clerk
The Scout Hut	Pelican Road, Pamber Heath	Rest Centre/safe place	George McGarvie 0780 878 4202  Melissa Stroud
Elm Park Garden Centre 8.30 am until 5.00 pm Monday to Saturday, and 10.00 am until 4.00 pm on Sundays and Bank Holidays.	Pamber End (Car park)	Rest Centre/safe place	01256 850587

## Emergency Contact List

The Clerk (EA Knight)	01256 882571	pamberclerk@btinternet.com
The Chairman (Cllr. C Goss)	Address: 41, Impstone Road, Pamber Heath	christopher.goss@hotmail.co.uk
AWE	0118 9814111	www.awe.co.uk
Emergency Planning and Resilience	Emergency Planning Unit 01962 846846 (1 <sup>st</sup> Contact)	epoffice@hants.gov.uk
Hampshire County Council	0845603 5638	www.hants.gov.uk
Hampshire County Council Adult Services	Adult Services: 0845 603 5630  Out of hours: 0845 600 45 55	adult.services@hants.gov.uk
BDBC Emergency Response	01256 844844	www.basingstoke.gov.uk
Police HQ	08450 45 45 45	www.hampshire.police.uk
Fire Service	02380 644000	www.hantsfire.gov.uk
NHS Direct	0845 4647	www.nhsdirect.nhs.uk
Environment Agency	0800 807060 Floodline 0845 988 1188	www.environment-agency.gov.uk
Hampshire Highways	0845 8504422	www.hants.gov.uk
Thames Water	0800 714614 /0845 9200 800 Leaks Sewer flooding/loss of supply	
SE Water	Out of hours emergency 0845 6021724	
Electricity	08000 727282	
Gas	0800 111 999	
North Hants Hospital A & E	01256 473202	
Pollution Emergency	0800 80 70 60	



## List of community organisations that may be helpful in identifying vulnerable people or communities in an emergency

Organisation	Name and role of contact	Phone number
Memorial Hall Committee	Committee	0118 9701269
St. Stephen's Hall Committee	Mr. S. Brownfield, Chairman	01256 889073
St. Stephen's Church	The PCC Secretary	01256 889040
Age Concern, Tadley	Age Concern	0118 9817567
CAB	CAB	0118 9814546
Housing Association		01256 338800
Hampshire County Council Adult Services	Adult Services: 0845 603 5630  Out of hours: 0845 600 45 55	adult.services@hants.gov.uk

## Activation triggers

1. When we get a flood warning
2. When we get a severe weather warning
3. When we have contact from BDBC
4. When the coordinator is contacted by police or other emergency services.
5. When alerted by parish councillor
6. When alerted by member of public and situation has been verified.

The plan will be activated by the clerk; a representative from the North Ward (the chairman); a representative from the South Ward (Cllr. March); any parish councillor if the co-ordinators are not available.

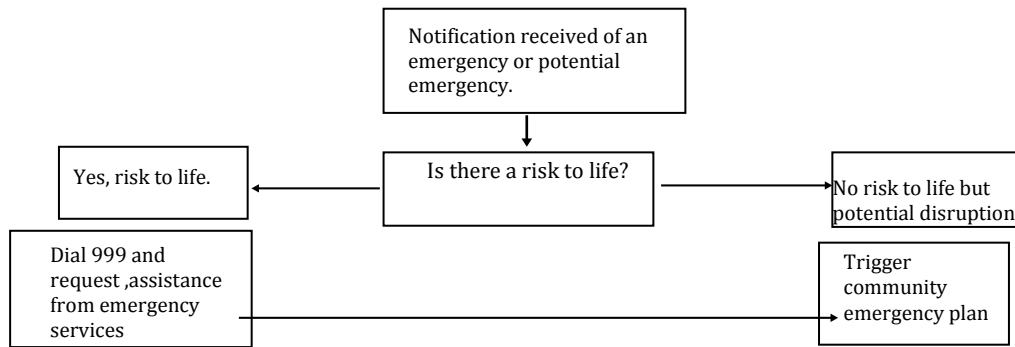
If emergency services are not available, councillors assess the situation and will take appropriate action where and when possible.

# ACTIVATION CHART

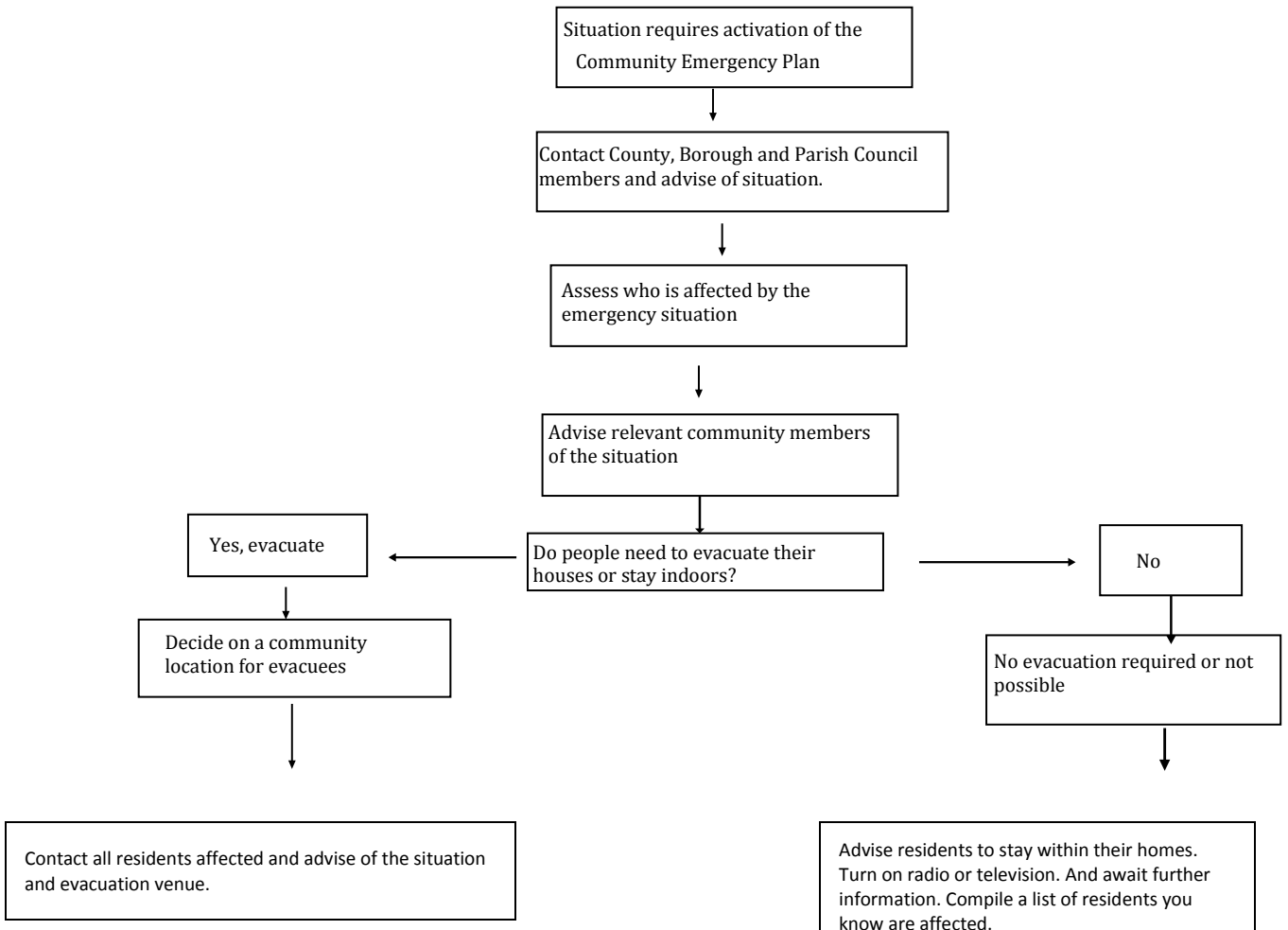
## What to do in an emergency

The following flowcharts will give you advice of the best course of action to take when alerted to an emergency.

All emergency situations are different and you must remember that should you or any member of local community be in danger then you should call 999 and request emergency help.



If the situation requires you to instigate the community emergency action plan.....



# Community Emergency Group first meeting Agenda

- Date:
  - Time:
  - Location:
  - Attendees:
- 1. What is the current situation?**
    - **Location of the emergency. Is it near:**
    - A school?
    - A vulnerable area?
    - A main access route?
    - Type of emergency:
    - Is there a threat to life?
    - Has electricity, gas or water been affected?
    - **Are there any vulnerable people involved?**
    - Elderly
    - Families with children
    - **What resources do we need?**
    - Food?
    - Off-road vehicles?
    - Blankets?
    - Shelter?
  - 2. It is a priority to establish contact with the County or Borough Council, as appropriate and emergency services eg. Hampshire Fire and Rescue.**
  - 3. How can we support the emergency services?**
  - 4. What actions can safely be taken?**
  - 5. Who is going to take the lead for the agreed actions?**
  - 6. Any other issues**

## Actions agreed with emergency responders in the event of an evacuation

1. Help police/local authority with door knocking
2. Give details to emergency services of anyone who might need extra help to leave their home
3. If possible, inform the local radio and TV stations.

## Alternative arrangements for staying in contact if usual communications have been disrupted

<b>Communication Type</b>	<b>Name of Contact</b>	<b>Location</b>
Website if available	Cllr. Tyson	Whole parish
Use vehicles to reach all parts of the parish. Cascade responsibility to other parishioners.	The Clerk, Chairman or any other councillor.	Whole parish
Knock on doors to inform parishioners of situation/any action that need be taken. Cascade responsibility to available parishioners.	Any councillor.	Whole parish
Use loudspeakers to relay information	Any councillor	Whole parish

## Useful Links

Link to AWE Emergency Plan:

<http://www.westberks.gov.uk/index.aspx?articleid=23078>

Link to flooding:

<http://www.basingstoke.gov.uk/browse/environment-and-planning/planning/emerging-local-plan/evidencebase/sfra/sfra-2012.htm>

# Pamber Parish Council

## Contact List

NAME	ADDRESS	TELEPHONE
<b>NORTH WARD</b>		
Chris Goss (Chairman)	41, Impstone Road, Pamber Heath. RG26 3EQ	0118 9700820
Philip Kingston (Vice Chairman)	10, Sandy Lane, Pamber Heath. RG26 3PA	0118 9813394
Roger Gardiner	Nuthatch, The Glen, Pamber Heath. RG26 3DY	0118 9701109
George McGarvie	71, Pelican Road, Pamber Heath. RG26 3EL	0780 878 4202
Trevor Young	Black Fans, Sandy Lane, Pamber Heath. RG26 3PA	01189810189
<b>SOUTH WARD</b>		
Mary Hale	Bow Brook, Aldermaston Road, Pamber End. RG26 5QN	01256 850428
George March	Pamber Farm, Bramley Road, Little London. RG26 5EZ	01256 850850
Frank Mitchell	Sideways, Green Lane, Pamber Green. RG26 3AD	01256 850734
David Snook	Berry Court Farm, New Road, Little London. RG26 5EU	01256 850036
Judith Tyson	Acorns, Silchester Road, Little London. RG26 5EP	01256 850037
<b>BOROUGH COUNCILLORS</b>		
Marilyn Tucker	Freemantle Farm Cottages, Hannington Road, North Oakley. Tadley. RG26 5TP	01256 782844
Roger Gardiner	Nuthatch, The Glen, Pamber Heath. RG26 3DY	0118 9701109
<b>COUNTY COUNCILLOR</b>		
Keith Chapman	Bracken Lodge, The Glen, Pamber Heath. RG26 3DY	01189 700831